

Dell™ Color Smart Multifunction Printer | S3845cdn Dell™ Color Smart Printer | S3840cdn

Supplement Guide

Setup Example for Authentication (Login Method), Authorization (Roles/Permissions),
and Accounting (ColorTrack)



Notes

NOTE:

- A NOTE indicates important information that helps you make better use of your printer.

Information in this document is subject to change without notice.

©2016 Dell Inc. All rights reserved.

Reproduction of these materials in any manner whatsoever without the written permission of Dell Inc. is strictly forbidden.

Trademarks used in this text:

Dell and the *DELL* logo are trademarks of Dell Inc.

Microsoft, Windows, Windows Server, and Active Directory are either trademarks or registered trademarks of Microsoft Corporation in the United States and/or other countries.

Novell and *Netware* are registered trademarks of Novell, Inc. in the United States and other countries.

IBM is a registered trademark of International Business Machines Corporation in the United States, other countries, or both.

Other trademarks and trade names may be used in this document to refer to either the entities claiming the marks and names or their products. Dell Inc. disclaims any proprietary interest in trademarks and trade names other than its own.

November 2016 Rev. A00

Use Case Summary

This document will explain how to setup Authentication (Login Method) Authorization (Roles/Permissions) and Accounting (ColorTrack) based on the following use-case. It is not a thorough explanation of all possible settings.

NOTE:

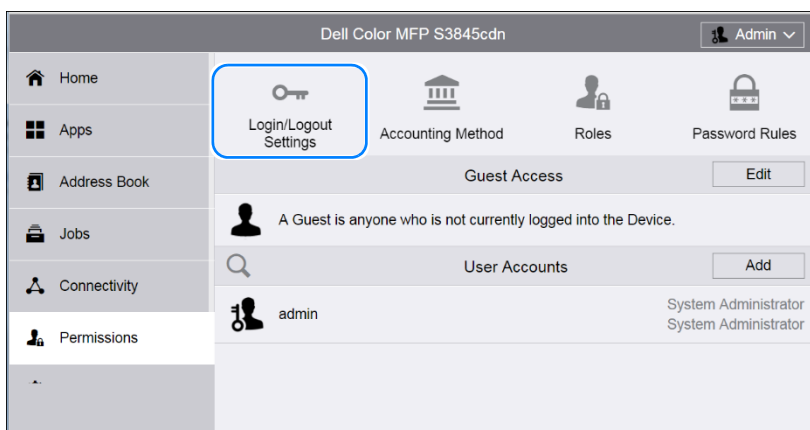
- Although the settings and procedures in this document are those for S3845cdn, you can use this document for S3840cdn because the feature concepts are common.
- 1 Users will be required to authenticate via Kerberos to an Active Directory® server which will also act as the LDAP server for managing permission groups.
 - 2 The guest user cannot access anything on the local UI.
 - 3 Users who belong to the group "colorusers" has access to all features except setup features. Two users will be created.
 - 4 Users who belong to the group "monousers" can only copy and print in mono and cannot open the Device app. Two users will be created.
 - 5 In the following example, ColorTrack accounting will be enabled to track usage and limit pages. "coloruser1" will be limited to 10 color pages and 10 mono pages. "monouser1" will be limited to 10 mono pages.

The following table is the summary of the users and groups which will be setup.

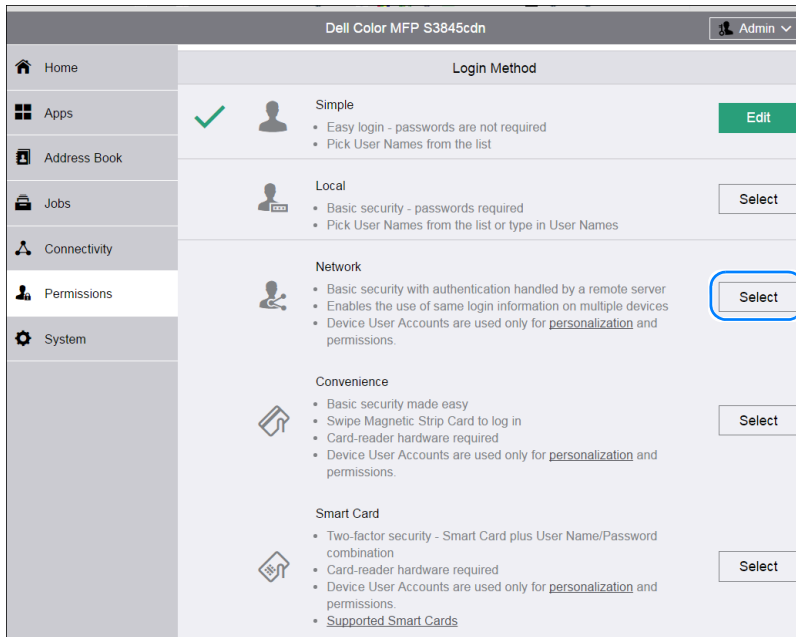
Groups	Users	Permissions	ColorTrack limits
colorusers	coloruser1	All features except setup	10 mono pages/10 color pages
	coloruser2		Unlimited mono and color pages
monousers	monouser1	Mono only.	10 mono pages
	monouser2	Cannot open Device App.	Unlimited mono pages

Setup Steps

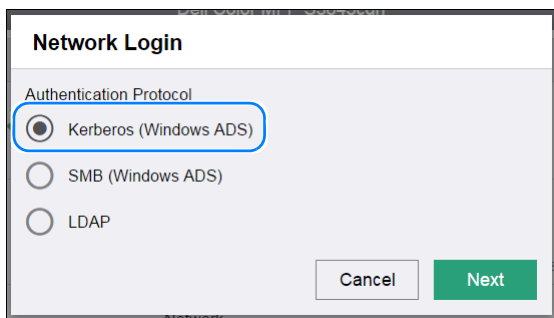
- 1 Setup Users and Groups on Active Directory Server
 - a Go to **Start → Management Tools → Active Directory Users and Computers** on Windows Server®. For this document, Windows Server 2008 is used.
 - b Create users and groups. For our example, we will create four users in two groups.
 - c Open the properties of the created group and add members in the members tab.
- 2 Setup Authentication on Device
 - a Login as Admin on the Web UI and go to → **Permissions → Login/Logout Settings**.



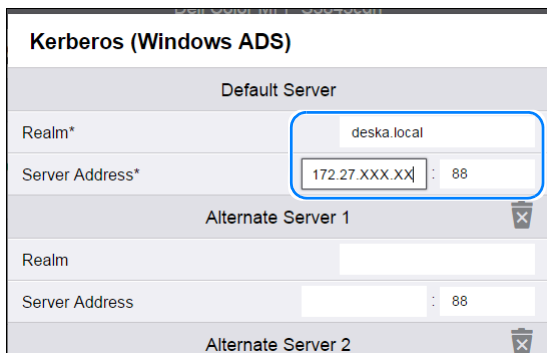
b Click the **Select** button of the **Network** Login Method.



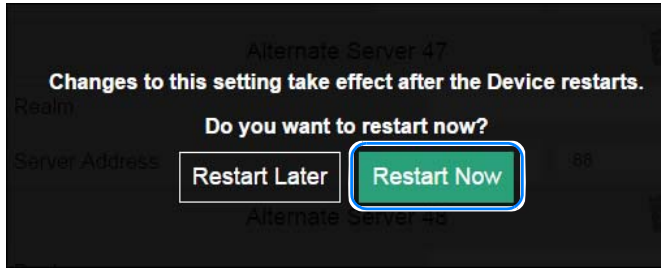
c Select **Kerberos(Windows ADS)** and click **Next**.



d Enter **Realm** and **Server Address**. Scroll to the bottom and click **DONE**.



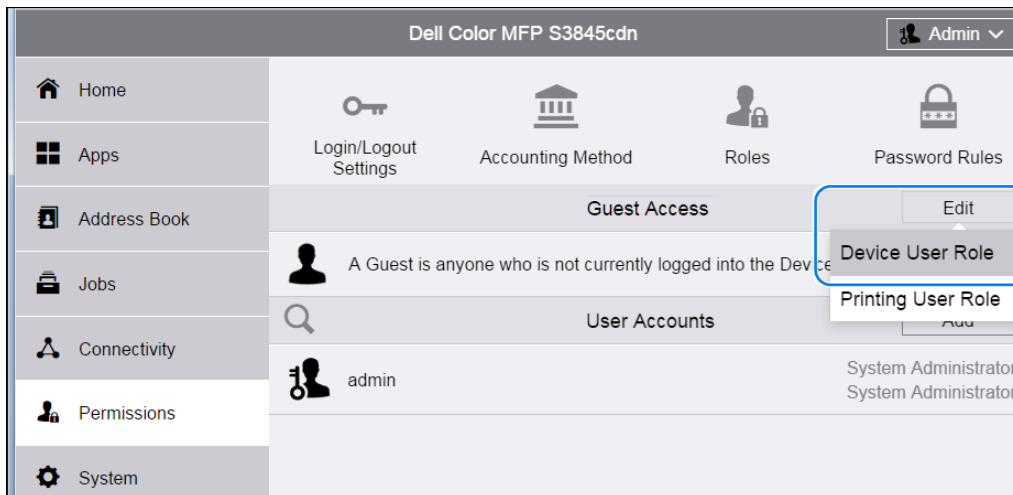
- e When prompted, click on **Restart**. The device will restart.



3 Limit Guest Access Role

Because it is not possible to set permissions stricter than guest access (which makes no sense), the guest permissions will be restricted from the default.

- a Go to **Permissions** and click **Edit** and select **Device User Role** next to **Guest Access**.



- b For the example, we will set **No Access** for **Control Panel Permissions** and **Home Only** for **Website Permissions**. Click **OK** when finished.

Edit Role

A Guest is anyone who is not currently logged into the Device.

Control Panel Permissions

- No Access**
Users must log in to access anything.
- Everything Except Setup**
Users can access everything except setup and configuration functions.
- Copy Only**
Users can use Copy Apps only. No access to Scanning Apps, Printing Apps, status, or set up functions.
- Access All**
Users can access all functions.
- Custom Permissions**

Website Permissions

- Everything Except Setup**
Users can access everything except Connectivity, Permissions, and System.
- Home Only**
Users only have access to the Home page.
- Custom Permissions**

Cancel OK

4 Set up Roles

- a As admin, go to **Permissions** → **Roles** → **Device User Roles**.

Dell Color MFP S3845cdn Admin

Home Apps Address Book Jobs Connectivity Permissions System

Login/Logout Settings Accounting Method Roles Password Rules

Device User Roles
Define permissions for people who use Device Control Panel and the Device Website.

Printing User Roles
Define permissions for people who submit print jobs to the Device from their PC.

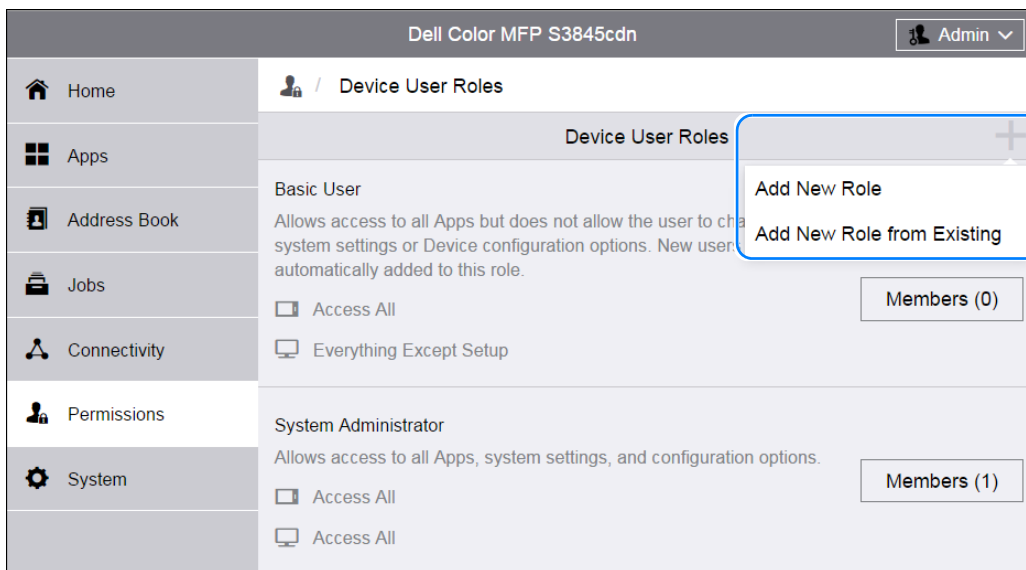
Setup LDAP Permissions Groups
Enable permissions to be handled by a remote server.

A Guest is anyone who is not currently logged in.

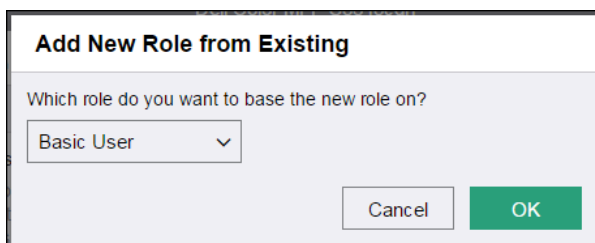
admin

Edit Add

- b The predefined roles are displayed. Press the + button and **Add New Role from Existing** to add a Device User Role.



- c Select **Basic User** and press **OK**.



- d For this example, the Role "Color Users" will be added. Enter the role name and description. The Permission will be changed to **Everything Except Setup** from **Access All** for the **Control Panel Permissions**. Click **OK** when finished.

Add Role

Color Users

Users have access to all features except setup.

Control Panel Permissions

Everything Except Setup
Users can access everything except setup and configuration functions.

Copy Only
Users can use Copy Apps only. No access to Scanning Apps, Printing Apps, status, or set up functions.

Access All
Users can access all functions.

Custom Permissions

Website Permissions

Everything Except Setup
Users can access everything except Connectivity, Permissions, and System.

Home Only
Users only have access to the Home page.

Custom Permissions

* Required

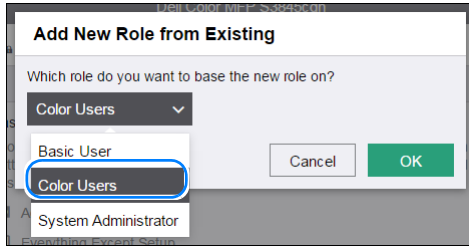
Cancel OK

- e Confirm the new role "Color Users" is created. Continue to create another group by clicking **+** followed by **Add New Role from Existing**.

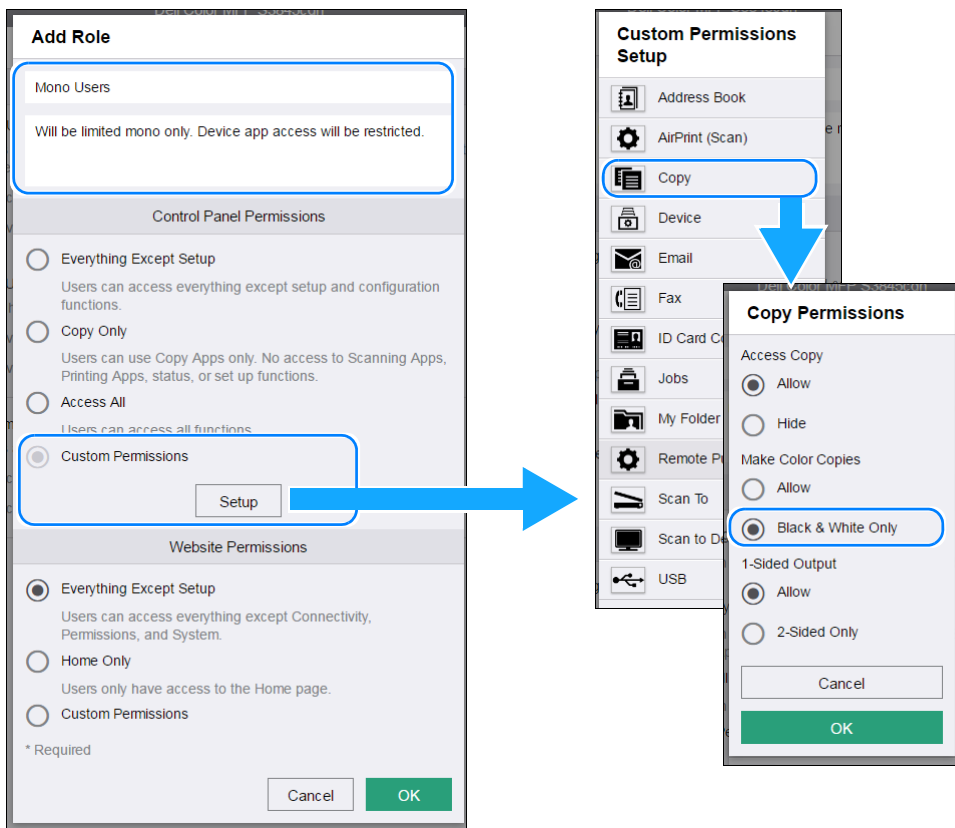
Device User Roles

	Basic User	Add New Role Add New Role from Existing Edit
Book	Allows access to all Apps but does not allow the user to change any system settings or Device configuration options. New users are automatically added to this role.	
	<input type="checkbox"/> Access All <input type="checkbox"/> Everything Except Setup	
Activity		
Permissions	Color Users Users have access to all features except setup. <input type="checkbox"/> Everything Except Setup <input type="checkbox"/> Everything Except Setup	Edit
	System Administrator	
	Allows access to all Apps, system settings, and configuration options.	

f The just created "Color Users" role will be used as the base for the next role.

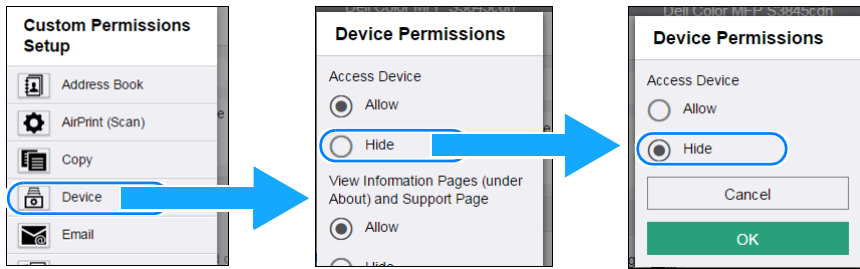


g The new role "Mono Users" will be created. Custom Permissions will be defined for this role. After entering **Role Name** and **Description**, click **Custom permissions** and click **Setup**. Continue to select **Copy**.

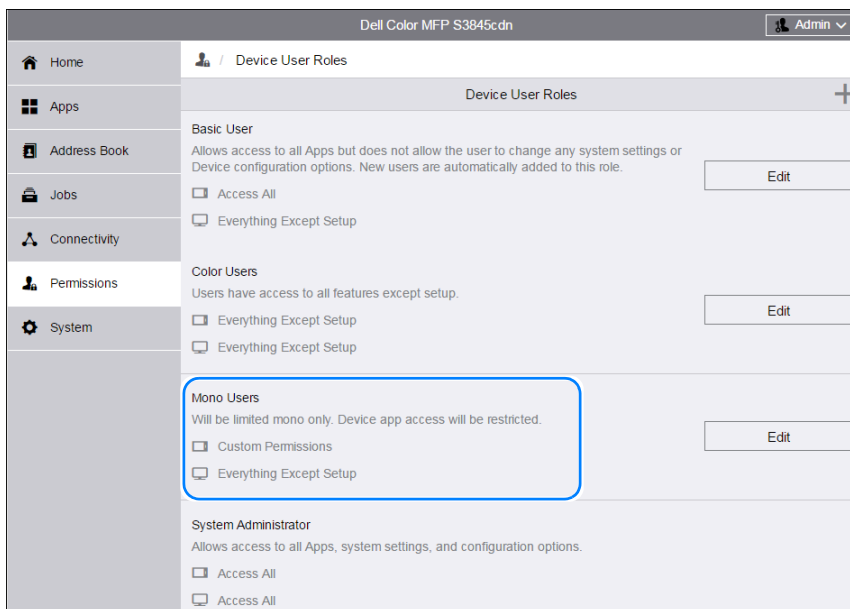


h Select **Black & White Only** under **Make Color Copies** to restrict color usage for this role.

- i Next, select **Device** and select **Hide** to restrict access to this app. Click **OK** and then **Close** on the **Custom Permissions Setup** window and **Close** on the **Add Role** menu.

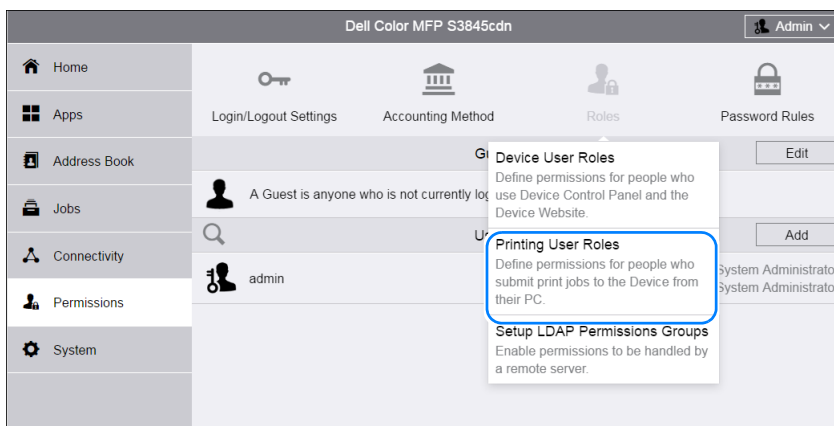


The roles are now created. These roles will be linked to LDAP groups in the next step.

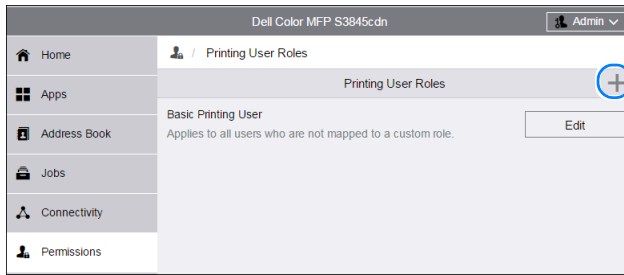


5 Setup Printing User Roles

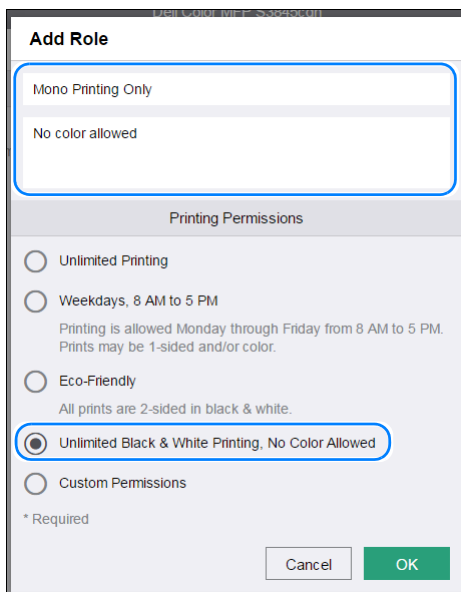
- a Return to **Permissions** top menu and select **Roles** → **Printing User Roles**.



b Click the + mark and add a new printing user role.

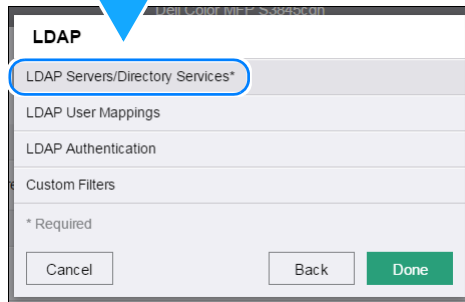
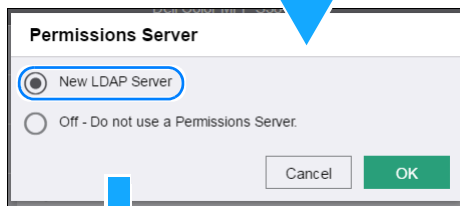
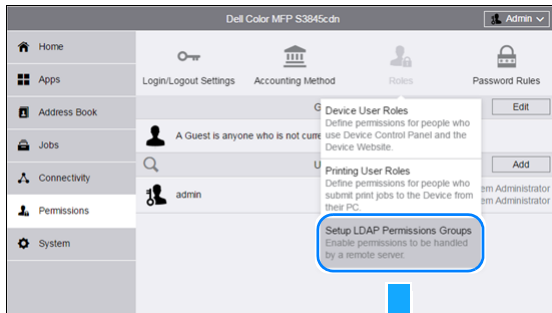


c Enter **Role Name**, **Description** and select **Unlimited Black & White Printing, No Color Allowed** as the **Printing Permission**. Click **OK** when finished.



6 Setup LDAP Permissions Groups

- a Go to **Permissions** → **Roles** → **Setup LDAP Permissions Groups**. Select **New LDAP Server** followed by **LDAP Servers/Directory Services**.



NOTE:

- This LDAP menu is the same menu as Web UI → **Connectivity** → **LDAP**.

- b** Set **IP Address/Host Name**, **LDAP Server**, **Search Directory Root**, and **Login Name** and **Password** based on the settings of the Active Directory server.

LDAP Servers/Directory Services

Server Information

IP Address/Host Name : 172.27.66.211 ; Port : 389

Backup IP Address/Host Name : Port : 389

LDAP Server : Microsoft Active Directory

Advanced Settings

Search Directory Root : dc=deska,dc=local

Login Credentials to Access LDAP Server : Device

Login Name : Administrator

Password :

Retype Password :

Maximum Number of Search Results : 5-100 50

Search Timeout : Specify Timeout

Timeout : 5-120 Seconds 30

LDAP Referrals : [Off]

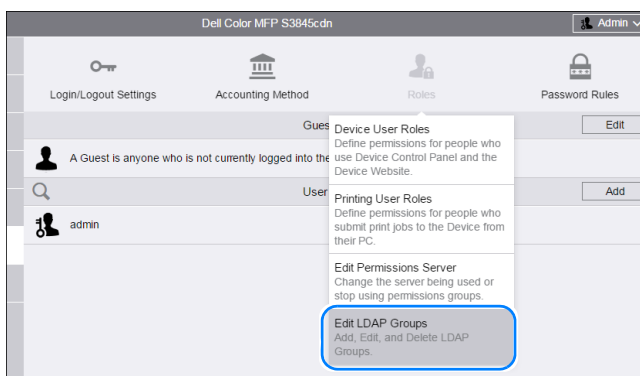
Perform Search On

Perform Search On : Surname & Given Name Fields

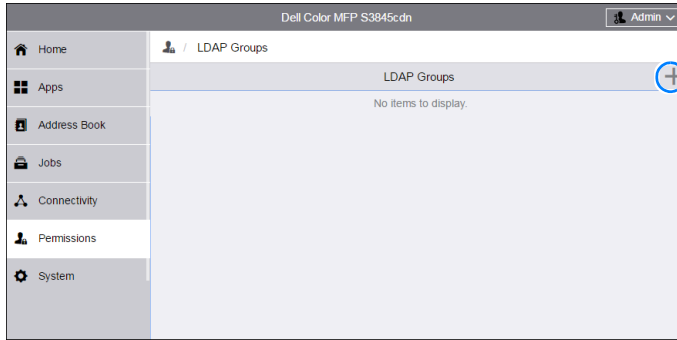
* Required

Cancel OK

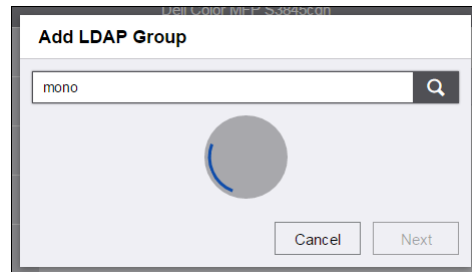
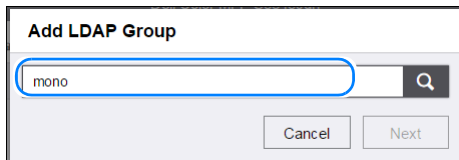
- c** Click **OK** and reboot the device.
- d** After rebooting, go to **Permissions** → **Roles** → **Edit LDAP Groups** which is now added to the menu.



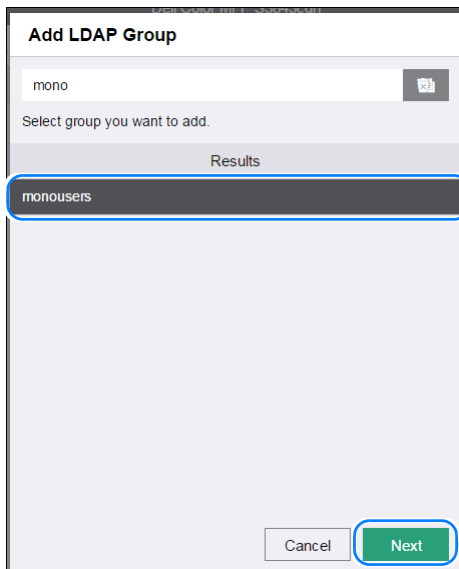
- e Click the + mark to add an LDAP group.



- f Type in the name (or part of the name) of the group created in step 1 and click **Next** or the search icon. If LDAP is configured properly it should search and return the LDAP group which matches.



- g Select the group and click **Next**.



- h Select the **Device User Role**. For this case, the custom created "Mono Users" will be selected. Click **Next**.

Select Device User Role

Basic User
Users are automatically added to this role.

Color Users
Users have access to all features except setup.

Mono Users
Will be limited mono only. Device app access will be restricted.

System Administrator
Allows access to all Apps, system settings, and configuration options.

Cancel Back Next

- i Select the **Printing User Role**. The custom created "Mono Printing Only" will be selected.

Select Printing User Role

Basic Printing User
Applies to all users who are not mapped to a custom role.

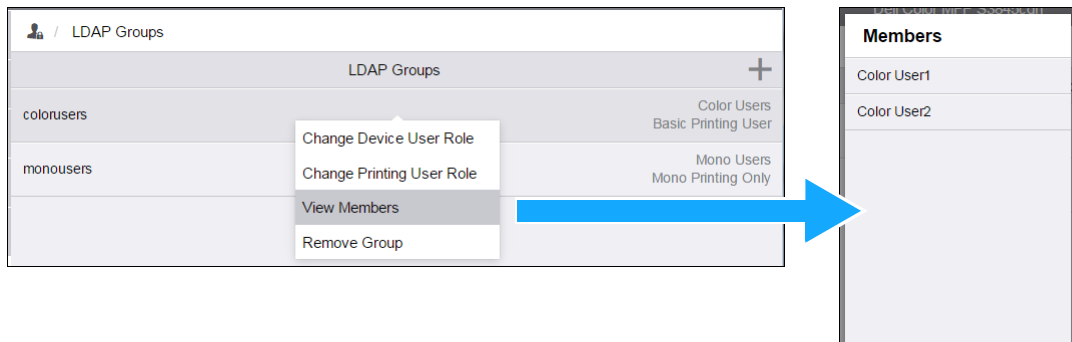
Mono Printing Only
No color allowed

Cancel Back Next

- j Repeat the steps from e. to i to map the "colorusers" LDAP group to the Device Role "Color Users" and the default "Basic Printing User" printing permission.

Dell Color MFP S3845cdn		Admin
Home	LDAP Groups	
Apps	LDAP Groups +	
Address Book	colorusers	Color Users Basic Printing User
Jobs	monousers	Mono Users Mono Printing Only

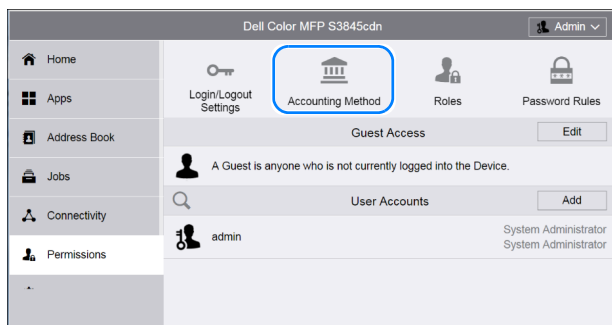
- k Members can be confirmed by clicking on the group and selecting **View Members**.



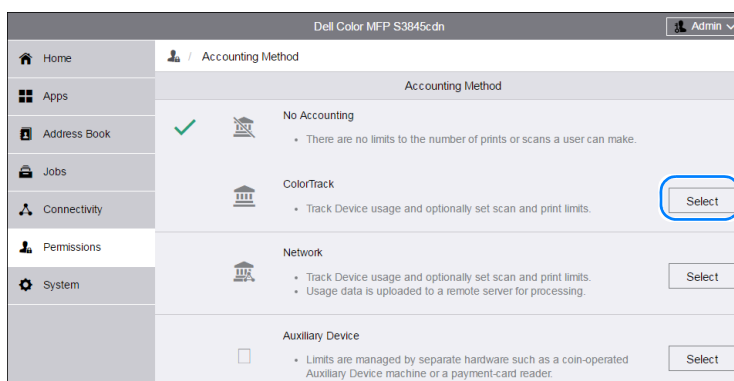
Through the steps up to this point, the four users can login via Active Directory and the users in “monousers” group can be restricted from using color. Setting up ColorTrack in the next step will further enable accounting and limiting number of pages.

7 ColorTrack Setup

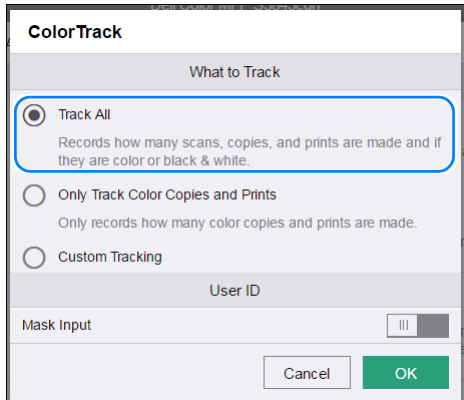
- a Access **Permissions** → **Accounting Method** on Web UI.



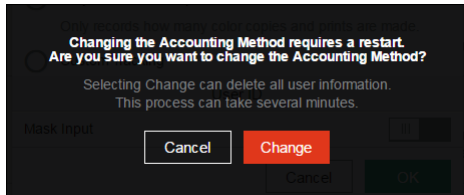
- b Click on **Select** button next to **ColorTrack**.



c For this test, select **Track All** and click **OK**.



d The following warning message will be displayed. Click **Change** and restart the device.

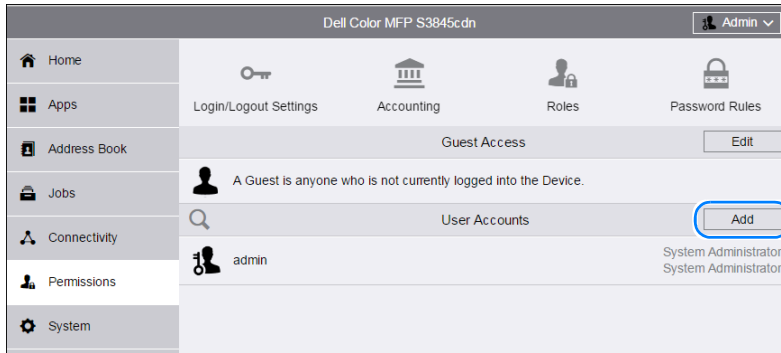


8 Adding ColorTrack Users

NOTE:

- Although users can login via Kerberos, in order to track usage and limit by number of pages, the users need to be manually registered on each device to manage via ColorTrack. The linking with the Kerberos/AD account will happen if the (local) ColorTrack user name is the same as the Kerberos login.

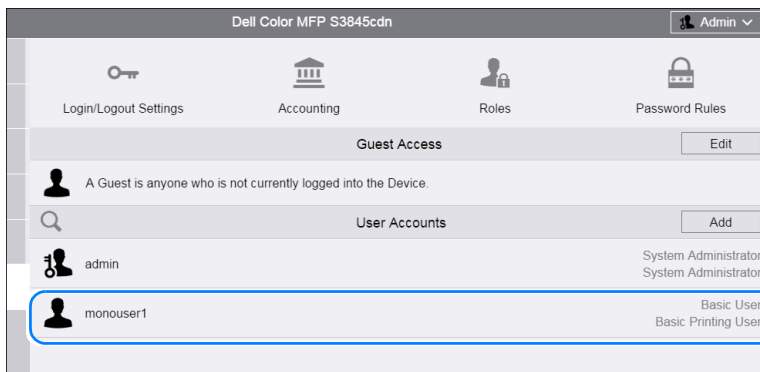
a Add a user account.



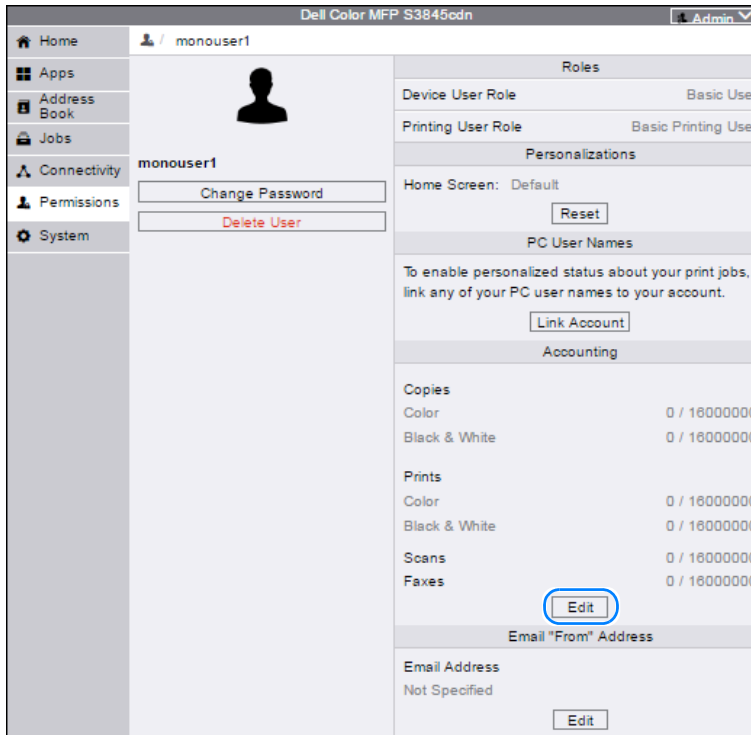
The 'Add New Account' form has the following fields and buttons:

- User Name: monouser1
- Password: (empty)
- Retype Password: (empty)
- Buttons: Cancel, Add

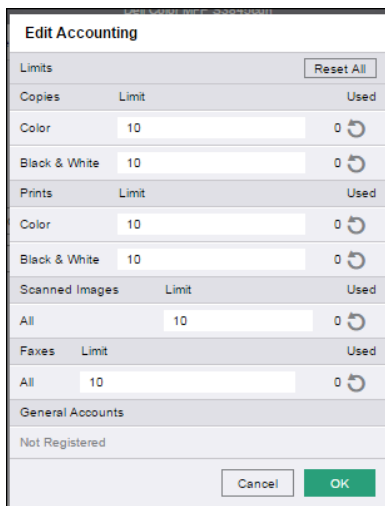
- b Enter a user name which matches the Active Directory user account. The password entered here will not be used for Network Authentication so it can be left blank. Click **Add**.
- c Select the user just created from the list.



d To edit the ColorTrack settings click on the **Edit** button in the **Accounting** section.



e For our test, we will set a limit of 10 pages for all features. Click **OK**.



f Repeat the steps a. to e. for the user "coloruser1". For comparison, we will not register "monouser2" and "coloruser2" for now.

9 Testing

a Logging in

- i. Because we have removed access rights to the guest user, the default screen on the device will become a login screen.
- ii. All four users can login to the Active Directory server. They will need to enter the credentials setup at the Active Directory server:
 - 1) User name
 - 2) Realm (domain)
 - 3) Password

b Testing permissions

- i. When "monouser1" and "monouser2" logs in, he will not be able to copy in color or open the Device app. When color is selected, an error will appear.

c Testing ColorTrack

- i. Because, "monouser1" and "coloruser1" are registered with ColorTrack, they will only be able to copy up to 10 pages. After that, an error will be displayed and be prevented from copying.
- ii. After login, if you press the login name on the upper left of the screen, you can view the **Account Summary** and view remaining pages.
- iii. "monouser2" is prevented from copying in color due to the permission setting but can copy limitlessly in mono. In order to set the ColorTrack limits, the "monouser2" ColorTrack account needs to be created (step 8).